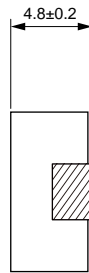




**MDE Series**  
**Molding Power Inductors**  
**Size 1050**

	0.22	±20%
	1.00	±20%
	1.50	±20%
	2.20	±20%
	3.30	±20%
	4.70	±20%
	5.60	±20%
	6.80	±20%
	10.0	±20%
	15.0	±20%
	22.0	±20%
	33.0	±20%
	47.0	±20%
	100	±20%

Saturation Current will cause L to drop approximately 20%  
 Temperature Rise Current: The actual value of D

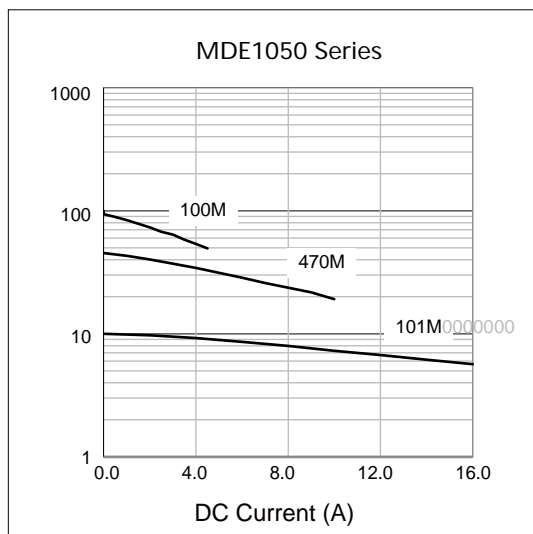


**Electrical Properties:**



## Typical Electrical Characteristics:

### Inductance vs DC Current Characteristics:



### Temperature Rise vs DC Current Characteristics:

